

MG



CLOCK

MG

Part No. **CA1100-30C**

Type: Electric  
Range: 12 hours  
Scale: Full  
Dia: 52 mm  
Bezel: 1/2 V chrome/  
inner black bezel

Fitting Instructions:



CLOCK

MG

Part No. **CA1100-31C**

Type: Electric  
Range: 12 hours  
Scale: Full  
Dia: 52mm  
Magnolia  
Bezel: 1/2 V chrome/  
inner black bezel"

Fitting Instructions:



CLOCK

MG

Part No. **CA1100-37C**

Type: Electric  
Range: 12 hours  
Scale: Full  
Dia: 52mm  
Bezel: 1/2 V chrome/  
inner black bezel  
Front Reset

Fitting Instructions:



CLOCK

MG

Part No. **CA1100-32C**

Type: Electric  
Range: 12 hours  
Scale: Full  
Dia: 52mm  
Magnolia  
Bezel: Chrome Full "V"

Fitting Instructions:



CLOCK

CLASSIC BLACK

Part No. **CA1100-01C**

Type: 12 volt Electric  
Range: 12 hour Scale: Full  
Fitting: Spade Dia: 52mm  
Bezel: Chrome  
Push Button to reset (Do Not  
Turn)  
Alternative: CA1100-14C  
(Chrome 1/2 Round)

Fitting Instructions:



CLOCK

MG

Part No. **CA1100-39C**

Type: Electric  
Range: 12 hours  
Scale: Full  
Dia: 52mm

Magnolia  
Bezel: Chrome Half "V"

Fitting Instructions:



## MG DUAL GAUGES



### OIL PRESSURE & WATER TEMP MG

Part No. **GD1301-64C078**

Type: Mechanical  
 Range: 0-100 psi / 90-230°F  
 Scale: Arc  
 Dia: 52mm  
 Bezel: Chrome Half "V"  
**Fitting Instructions:**



### OIL PRESSURE & WATER TEMP MG

Part No. **GD1301-102C072**

Type: Mechanical  
 Range: 0-100 psi / 30-110°C  
 Scale: Arc  
 Dia: 52mm  
 Bezel: Chrome Half "V"  
**Fitting Instructions:**



### OIL PRESSURE & WATER TEMP MG

Part No. **GD1301-104C078**

Type: Mechanical  
 Range: 0-60 psi / C-N-H  
 Scale: Arc  
 Dia: 52mm  
 Bezel: Chrome Half "V"  
**Fitting Instructions:**



### OIL PRESSURE & WATER TEMP MG

Part No. **GD1301-105C078**

Type: Mechanical  
 Range: 0-60 psi / C-N-H  
 Scale: Arc  
 Dia: 52mm  
 Bezel: Chrome Half "V"  
**Fitting Instructions:**



### OIL PRESSURE & WATER TEMP MG

Part No. **GD1301-21C072**

Type: Mechanical  
 Range: 0-100 psi / C-N-H  
 Scale: Arc  
 Dia: 52mm  
 Bezel: Chrome Half "V"  
**Fitting Instructions:**



### OIL PRESSURE & WATER TEMP MG

Part No. **GD1301-45C078**

Type: Mechanical  
 Range: 0-60 psi / C-N-H  
 Scale: Arc  
 Dia: 52mm  
 Bezel: Chrome Half "V"  
**Fitting Instructions:**



### OIL PRESSURE & WATER TEMP MG

Part No. **GD1301-53C078**

Type: Mechanical  
 Range: 0-80 psi / C-N-H  
 Scale: Arc  
 Dia: 52 mm  
 Bezel: Chrome Half "V"  
**Fitting Instructions:**



### OIL PRESSURE & WATER TEMP MG

Part No. **GD1301-61C078**

Type: Mechanical  
 Range: 0-100 psi / 90-230°F  
 Scale: Arc  
 Dia: 52mm  
 Bezel: Chrome Half "V"  
**Fitting Instructions:**



**OIL PRESSURE & WATER TEMP MG**

Part No. **GD1301-63C072**

Type: Mechanical  
Range: 0-100psi/90-230°F  
Scale: Arc  
Dia: 52mm  
Bezel: Chrome Half "V"  
Back Illumination  
**Fitting Instructions:**



**OIL PRESSURE & WATER TEMP MGB**

Part No. **GD1301-83C072**

Type: Mechanical  
Range: 0-100 psi / C-N-H  
Scale: Arc  
Dia: 52mm  
Bezel: Chrome Half "V"  
**Fitting Instructions:**



**OIL PRESSURE & WATER TEMP MGB**

Part No. **GD1301-83C078**

Type: Mechanical  
Range: 0-100 psi / C-N-H  
Scale: Arc  
Dia: 52mm  
Bezel: Chrome Half "V"  
**Fitting Instructions:**



**OIL PRESSURE & WATER TEMP MG**

Part No. **GD1310-28C078**

Type: Mechanical  
Range: 0-60 psi / 30-110°C  
Scale: Arc  
Dia: 52mm  
Bezel: Chrome Full "V"  
**Fitting Instructions:**



Representative Image

**OIL PRESSURE & WATER TEMP MGA**

Part No. **GD1501-01C078**

Type: Mechanical  
Range: 0-100 psi / 90-230°F  
Scale: Arc  
Dia: 52mm  
Bezel: Chrome Half "V"  
**Fitting Instructions:**



**OIL PRESSURE & WATER TEMP MG**

Part No. **GD1501-04C078**

Type: Mechanical  
Range: 0-100psi/30-110°C  
Scale: Arc  
Dia: 52mm  
Bezel: Chrome Half "V"  
**Fitting Instructions:**



**OIL PRESSURE & WATER TEMP DUAL GAUGES**

Part No. **GD1501-14C078**

Type: Mechanical  
Range: 0-100 psi / 90-230°F  
Scale: Arc  
Dia: 52 mm  
Bezel: Chrome Half "V"  
Bulb: A2  
Capillary length: 78 inches  
Dial: Black  
Oil Pressure Kit: LK-2 required  
**Fitting Instructions:**



**OIL PRESSURE & WATER TEMP MG**

Part No. **GD1501-15C078**

Type: Mechanical  
Range: 0-100 psi / 30-110°C  
Scale: Arc  
Dia: 52mm  
Bezel: Chrome Half "V"  
**Fitting Instructions:**



**OIL PRESSURE & WATER TEMP MG**

Part No. **GD1502-06C072**

Type: Mechanical  
Range: 0-100 psi / C-N-H  
Scale: Arc  
Dia: 52 mm  
Bezel: Chrome Half "V"  
**Fitting Instructions:**



Slot Illumination

## MAGNOLIA DUAL GAUGES MG & AUSTIN HEALEY



### OIL PRESSURE & WATER TEMP MG

Part No. **GD1301-105C078**

Type: Mechanical  
 Range: 0-60 psi / C-N-H  
 Scale: Arc  
 Dia: 52mm  
 Bezel: Chrome Half "V"  
**Fitting Instructions:**



### OIL PRESSURE & WATER TEMP DUAL GAUGES

Part No. **GD1301-75C072**

Type: Mechanical  
 Range: 0-100psi/30-110°C  
 Scale: Arc  
 Dia: 52mm  
 Bezel: Chrome Half "V"  
 Capillary length: 72 inches  
 Dial: Magnolia  
 Oil Pressure Kit: LK-2 required  
**Fitting Instructions:**



### OIL PRESSURE & WATER TEMP MG

Part No. **GD1301-104C078**

Type: Mechanical  
 Range: 0-60 psi / C-N-H  
 Scale: Arc  
 Dia: 52mm  
 Bezel: Chrome Half "V"  
**Fitting Instructions:**



### OIL PRESSURE & WATER TEMP DUAL GAUGES

Part No. **GD1301-96C078**

Type: Mechanical  
 Range: 0-100 psi/30-110°C  
 Scale: Arc  
 Dia: 52mm  
 Bezel: Chrome Full "V"  
 Bulb: K  
 Capillary length: 78 inches  
 Dial: Black  
 Oil Pressure Kit: LK-2 required  
**Fitting Instructions:**



### OIL PRESSURE & WATER TEMP DUAL GAUGES

Part No. **GD1301-85C078**

Type: Mechanical  
 Range: 0-100psi/30-110°C  
 Scale: Arc  
 Dia: 52mm  
 Bezel: Chrome Half "V"  
 Bulb: K  
 Capillary length: 78 inches  
 Dial: Magnolia  
 Oil Pressure Kit: LK-2 required  
**Fitting Instructions:**



### OIL PRESSURE & WATER TEMP DUAL GAUGES

Part No. **GD1301-92C072**

Type: Mechanical  
 Range: 0-100psi/30-110°C  
 Scale: Arc  
 Dia: 52mm  
 Bezel: Black Half Round  
 Bulb: A2  
 Capillary length: 72 inches  
 Dial: Magnolia  
 Oil Pressure Kit: LK-2 required  
**Fitting Instructions:**



### OIL PRESSURE & WATER TEMP DUAL GAUGES

Part No. **GD1301-14C078**

Type: Mechanical  
 Range: 0-100 psi / 30-110 C  
 Scale: Arc  
 Dia: 52 mm  
 Bezel: Chrome Full "V"  
 Bulb: A2  
 Capillary length: 78 inches  
 Dial: Magnolia  
 Oil Pressure Kit: LK-2 required  
**Fitting Instructions:**



### OIL PRESSURE & WATER TEMP DUAL GAUGES

Part No. **GD1301-81C078**

Type: Mechanical  
 Range: 100psi/30-110°C  
 Scale: Arc  
 Dia: 52mm  
 Bezel: Chrome Half "V"  
 Bulb: A2  
 Capillary length: 78 inches  
 Dial: Magnolia  
 Oil Pressure Kit: LK-2 required  
**Fitting Instructions:**



## MG FUEL GAUGES

Bimetal Fuel gauges require a voltage regulator



### FUEL LEVEL MGB

Part No. **BF2226-00**

Type: Bimetal Electric  
Range: E-1/2-F  
Scale: Arc  
Dia: 52mm  
Bezel: Chrome Half "V"

**Fitting Instructions:**

250-20 ohms



### FUEL LEVEL MGB

Part No. **BF2226-00B**

Type: Bimetal Electric  
Range: E-1/2-F  
Scale: Arc  
Dia: 52mm  
Bezel: Black Half "V"

**Fitting Instructions:**

250-20 ohms



### FUEL LEVEL MGB

Part No. **BF2226-01C**

Type: Bimetal Electric  
Range: E-1/2-F  
Scale: Arc  
Dia: 52mm  
Bezel: Chrome Half "V"

**Fitting Instructions:**

250-20 ohms



### FUEL LEVEL MGB

Part No. **BF2226-02**

Type: Bimetal Electric  
Range: E-1/2-F  
Scale: Arc  
Dia: 52mm  
Bezel: Chrome Full "V"

**Fitting Instructions:**

250-20 ohms



### FUEL LEVEL MG

Part No. **FG2530-70**

Type: Bimetal Electric  
Range: 250-19 ohms  
Scale: Arc  
Dia: 52mm

Bezel: Chrome Half "V"

**Fitting Instructions:**

250-20 OHMS



### FUEL LEVEL MG

Part No. **FG2530-05**

Type: Bimetal Electric  
Range: E-1/2-F  
Dia: 52mm  
Bezel: Chrome Half "V"

**Fitting Instructions:**

250-20 OHMS



### FUEL LEVEL MG

Part No. **BF2239-00**

Type: Bimetal Electric  
Range: E-1/2-F  
Scale: Arc  
Dia: 52mm  
Bezel: Chrome Half "V"

**Fitting Instructions:**

250-20 ohms



### PRESSURE MG

Part No. **PL2324-00**

Type: Mechanical  
Range: 0-100 psi / 0-7 kg  
Scale: Arc  
Dia: 52mm  
Bezel: Chrome Half "V"

**Fitting Instructions:**



## MGA JAEGER



### SPEEDOMETER

MGA

Part No. **SN6104-06CB**

Type:Electric  
 Range:0-200kph  
 Scale:Full  
 Dia:100mm  
 Bezel:Chrome Half "V"  
**Fitting Instructions**

Jaeger

Representative image



### TACHOMETER

MGA

Part No. **RN2312-01CB**

Type:Electric  
 Range:0-7000rpm  
 Scale:Full  
 Dia:100mm  
 Bezel:Chrome Half "V"  
**Fitting Instructions**



### SPEEDOMETER

MG

Part No. **SN6161-07**

Type:Mechanical  
 Range:0-200 kph  
 Scale:Full  
 Dia:100mm  
 Bezel:Chrome Half "V"

900 REVS PER KM

**Fitting Instructions:**



### OIL PRESSURE & WATER TEMP

MGA

Part No. **GD1501-01C078**

Type:Mechanical  
 Range:0-100 psi /90-230 °F  
 Scale:Arc  
 Dia:52mm  
 Bezel:Chrome Half "V"  
**Fitting Instructions**



### OIL PRESSURE & WATER TEMP

MG

Part No. **GD1501-04C078**

Type:Mechanical  
 Range:0-100psi/30-110 °C  
 Scale:Arc  
 Dia:52mm  
 Bezel:Chrome Half "V"  
**Fitting Instructions**



### FUEL LEVEL

MG

Part No. **FG2530-05**

Type:BimetalElectric  
 Range:E-1/2-F  
 Dia:52mm  
 Bezel:Chrome Half "V"

**Fitting Instructions**

250-20 OHMS



## MGB SERIES 3 SPEEDOMETER'S



### SPEEDOMETER

MG

Part No. **SN5226-00**

Type: Mechanical  
 Range: 0-140 mph  
 Scale: Full  
 Dia: 80mm  
 Bezel: Chrome Half "V"

1020 turns per mile  
**Fitting Instructions:**



### SPEEDOMETER

MG

Part No. **SN5226-01**

Type: Mechanical  
 Range: 0-220 kph  
 Scale: Full  
 Dia: 80mm  
 Bezel: Chrome Half "V"

640 turns per mile  
**Fitting Instructions:**



### SPEEDOMETER

MG

Part No. **SN5226-10**

Type: Mechanical  
 Range: 0-160 kph  
 Scale: Full  
 Dia: 80mm  
 Bezel: Chrome Half "V"  
 840 turns per mile

**Fitting Instructions:**

Representative Image



### SPEEDOMETER

MG

Part No. **SN5230-11S**

Type: Mechanical  
 Range: 0-140 mph  
 Scale: Full  
 Dia: 80mm  
 Bezel: Chrome Half "V"

**Fitting Instructions:**

960 Turns per mile



### SPEEDOMETER

MG

Part No. **SN5230-011CB**

Type: Electric  
 Range: 0-140 mph  
 Scale: Full  
 Dia: 80mm  
 Bezel: Chrome Half "V"

**Fitting Instructions**



### SPEEDOMETER

MG

Part No. **SN5230-11CB**

Type: Electric  
 Range: 0-140 mph  
 Scale: Full  
 Dia: 80mm  
 Bezel: Chrome Half "V"

**Fitting Instructions**



### SPEEDOMETER

MG

Part No. **SN5230-12CB**

Type: Electric  
 Range: 0-220 kph  
 Scale: Full  
 Dia: 80mm  
 Bezel: Chrome Half "V"

**Fitting Instructions:**

Representative Image



### SPEEDOMETER

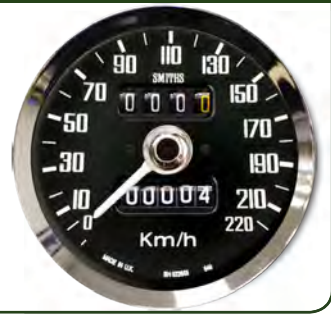
MG

Part No. **SN5230-12S**

Type: Mechanical  
 Range: 0-220 kph  
 Scale: Full  
 Dia: 80mm  
 Bezel: Chrome Half "V"

**Fitting Instructions**

600 revs per mile



## MGB SERIES 3 SPEEDOMETER'S



### SPEEDOMETER

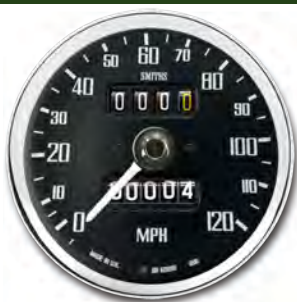
MG

Part No. **SN5230-13**

Type: Mechanical  
 Range: 0-120 mph  
 Scale: Full  
 Dia: 80mm  
 Bezel: Chrome Half "V"

1000 turns per mile

Fitting Instructions:



### SPEEDOMETER

MG

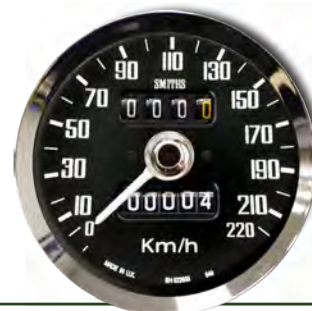
Part No. **SN5230-15**

Type: Mechanical  
 Range: 0-200 kph  
 Scale: Full  
 Dia: 80mm  
 Bezel: Black Half "V"

620 Revs per mile

Fitting Instructions:

Representative Image



### SPEEDOMETER

MG

Part No. **SN5230-15C**

Type: Mechanical  
 Range: 0-200 kph  
 Scale: Full  
 Dia: 80mm  
 Bezel: Chrome Half "V"

620 Revs per mile

Fitting Instructions:



### SPEEDOMETER

MG

Part No. **SN5231-00**

Type: Mechanical  
 Range: 0-120 mph  
 Scale: Full  
 Dia: 80mm  
 Bezel: Chrome Half "V"

1280 revs per mile

Fitting Instructions:



### SPEEDOMETER

MG

Part No. **SN5234-00**

Type: Mechanical  
 Range: 0-120 mph  
 Scale: Full  
 Dia: 80mm  
 Bezel: Chrome Half "V"

Dual Scale  
 120mph/180kmh

1000 revs per mile

Fitting Instructions:



### SPEEDOMETER

MG

Part No. **SN5234-02**

Type: Mechanical  
 Range: 0-120 mph  
 Scale: Full  
 Dia: 80mm  
 Bezel: Chrome Half "V"

Dual Scale  
 120mph/190kmh

1000 revs per mile

Fitting Instructions:



### SPEEDOMETER

MG

Part No. **SN5234-50CB**

Type: Electric  
 Range: 0-220 kph  
 Scale: Full  
 Dia: 80mm  
 Bezel: Chrome Half "V"

Dual Scale

Fitting Instructions:



### SPEEDOMETER

MG

Part No. **SN5234-13**

Type: Mechanical  
 Range: 0-120 mph  
 Scale: Full  
 Dia: 80mm  
 Bezel: Chrome Half "V"

1000 revs per mile

Fitting Instructions:





## MGB SERIES 1 SPEEDOMETER'S



### SPEEDOMETER

MG

Part No. **SN6125-04**

Type: Mechanical  
Range: 0-120 mph

Scale: Full

Dia: 100mm

Bezel: Chrome Half "V"  
1060 Revs per mile

**Fitting Instructions:**



Representative image

### SPEEDOMETER

MG

Part No. **SN6125-04A**

Type: Mechanical

Range: 0-120 mph

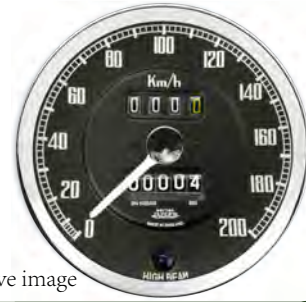
Scale: Full

Dia: 100mm

Bezel: Chrome 1/2 V

1060 revs per mile

**Fitting Instructions:**



Representative image

### SPEEDOMETER

MG

Part No. **SN6125-05**

Type: Mechanical

Range: 0-200 kph

Scale: Full

Dia: 100mm

Bezel: Chrome Half "V"

660 Revs per km

**Fitting Instructions:**



### SPEEDOMETER

MG

Part No. **SN6125-06**

Type: Mechanical

Range: 0-120 mph

Scale: Full

Dia: 100mm

Bezel: Chrome Half "V"

1060 revs per mile

**Fitting Instructions:**



Representative Image

### SPEEDOMETER

MG

Part No. **SN6125-06A**

Type: Mechanical

Range: 0-120 mph

Scale: Full

Dia: 100mm

Bezel: Chrome Half "V"

1020 turns per mile

**Fitting Instructions:**



Representative Image

### SPEEDOMETER

MG

Part No. **SN6142-01**

Type: Mechanical

Range: 0-200 kph

Scale: Full

Dia: 100mm

Bezel: Chrome Half "V"

660 turns per kilometer

**Fitting Instructions:**



### SPEEDOMETER

MG

Part No. **SN6142-07**

Type: Mechanical

Range: 0-160 kph

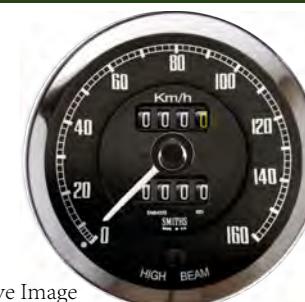
Scale: Full

Dia: 100mm

Bezel: Chrome Half "V"

840 turns per kilometer

**Fitting Instructions:**



Representative Image

### SPEEDOMETER

MG

Part No. **SN6142-09CB**

Type: Electric

Range: 0-120 mph

Scale: Full

Dia: 100mm

Bezel: Chrome Half "V"

**Fitting Instructions**



## MGB SERIES 2 SPEEDOMETER'S



### SPEEDOMETER

MG

Part No. **SN6144-00**

Type: Mechanical  
 Range: 0-120 mph  
 Scale: Full  
 Dia: 100mm  
 Bezel: Chrome Half "V"

1040 revs per mile  
**Fitting Instructions:**



### SPEEDOMETER

MG

Part No. **SN6144-01**

Type: Mechanical  
 Range: 0-200 kph  
 Scale: Full  
 Dia: 100mm  
 Bezel: Chrome Half "V"

660 revs per km  
**Fitting Instructions:**



### SPEEDOMETER

MG

Part No. **SN6144-02**

Type: Mechanical  
 Range: 0-120 mph  
 Scale: Full  
 Dia: 100mm  
 Bezel: Chrome Half "V"

1020 revs per mile  
**Fitting Instructions:**



### SPEEDOMETER

MG

Part No. **SN6144-20**

Type: Mechanical  
 Range: 0-120 mph  
 Scale: Full  
 Dia: 100mm  
 Bezel: Chrome Half "V"

1280 revs per mile  
**Fitting Instructions:**



### SPEEDOMETER

MG

Part No. **SN6144-23**

Type: Mechanical  
 Range: 0-120 mph  
 Scale: Full  
 Dia: 100mm  
 Bezel: Chrome Half "V"

1280 revs per mile  
**Fitting Instructions:**



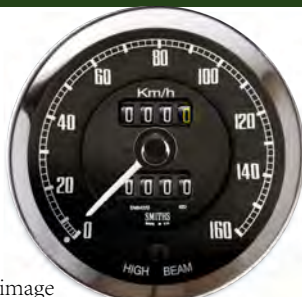
### SPEEDOMETER

MG

Part No. **SN6144-28**

Type: Mechanical  
 Range: 0-120 mph  
 Scale: Full  
 Dia: 100mm  
 Bezel: Chrome Half "V"

1216 revs per mile  
**Fitting Instructions:**



Representative image

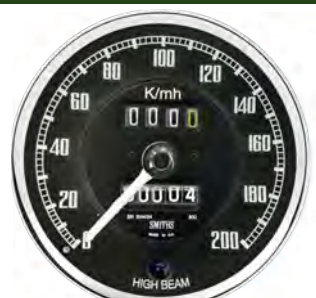
### SPEEDOMETER

MG

Part No. **SN6144-24**

Type: Mechanical  
 Range: 0-200 kph  
 Scale: Full  
 Dia: 100mm  
 Bezel: Chrome Half "V"

800 revs per km  
**Fitting Instructions:**



## MGB SERIES 2 ELECTRONIC SPEEDOMETER'S

### SPEEDOMETER

MG

Part No. **SN6144-000CB**

Type: Electric  
 Range: 0-120mph  
 Scale: Full  
 Dia: 100mm  
 Bezel: Chrome Half "V"  
[Fitting Instructions](#)



### SPEEDOMETER

MG

Part No. **SN6144-003CB**

Type: Electric  
 Range: 0-200kph  
 Scale: Full  
 Dia: 100mm  
 Bezel: Chrome Half "V"  
[Fitting Instructions](#)



### SPEEDOMETER

MG

Part No. **SN6144-36CB**

Type: Electric  
 Range: 0-120mph  
 Scale: Full  
 Dia: 100mm  
 Bezel: Chrome Half "V"  
[Fitting Instructions](#)



### SPEEDOMETER

MG

Part No. **SN6144-38CB**

Type: Electric  
 Range: 0-120 mph  
 Scale: Full  
 Dia: 100mm  
 Bezel: Chrome Half "V"  
[Fitting Instructions](#)



Representative image

## MG MAGNOLIA SPEEDOMETER'S



### SPEEDOMETER

MG

Part No. **SN6144-01CB**

Type: Electric

Range: 0-200 kph

Scale: Full

Dia: 100mm

Bezel: Chrome Half "V"

**Fitting Instructions**



### SPEEDOMETER

MG

Part No. **SN6144-36C**

Type: Mechanical

Range: 0-120mph

Scale: Full

Dia: 100mm

Bezel: Chrome Half "V"

1040 TURNS PER MILE

**Fitting Instructions:**



### SPEEDOMETER

MG

Part No. **SN6144-37C**

Type: Mechanical

Range: 0-120mph

Scale: Full

Dia: 100mm

Bezel: Chrome Half "V"

1130 Turns Per Mile

**Fitting Instructions:**



### TACHOMETER

MG

Part No. **RVI2401-20CB**

Type: Electric

Range: 0-7000 rpm

Scale: Full

Dia: 100mm

Bezel: Chrome Half "V"

12V -ve earth

Stepping Motor  
Movement

Magnolia

**Fitting Instructions**

Representative Image



### TACHOMETER

MG

Part No. **RVI2415-01CB**

Type: Electric

Range: 0-7000 rpm

Scale: Full

Dia: 100mm

Bezel: Chrome Half "V"

12V -ve earth

Stepping Motor Movement  
Magnolia

**Fitting Instructions**

Representative Image



## MGB SERIES 3 TACHOMETER'S



### TACHOMETER

MGB

Part No. **RVC1410-00CB**

Type: Electric  
 Range: 0-7000 rpm  
 Scale: Full  
 Dia: 80mm  
 Bezel: Chrome Half "V"  
**Fitting Instructions**



### TACHOMETER

MGB

Part No. **RVC1414-00CB**

Type: Electric  
 Range: 0-7000 rpm  
 Scale: Full  
 Dia: 80mm  
 Bezel: Chrome Half "V"  
**Fitting Instructions**



### TACHOMETER

MGB

Part No. **RVC1414-01CB**

Type: Electric  
 Range: 0-7000 rpm  
 Scale: Full  
 Dia: 80mm  
 Bezel: Chrome Half "V"  
**Fitting Instructions**



### TACHOMETER

MGB GT V8

Part No. **RVC1810-00CB**

Type: Electric  
 Range: 0-7000 rpm  
 Scale: Full  
 Dia: 80mm  
 Bezel: Chrome Half "V"  
**Fitting Instructions**



### TACHOMETER

MGB

Part No. **RVI1439-00CB**

Type: Electric  
 Range: 0-7000 rpm  
 Scale: Full  
 Dia: 80mm  
 Bezel: Chrome Half "V"  
 Red and Orange segments at 5500 - 7000 RPM  
**Fitting Instructions**



### TACHOMETER

MGB GT

Part No. **RVI1433-00CB**

Type: Stepping Motor Electric  
 Range: 0-7000 rpm  
 Scale: Full  
 Dia: 80mm  
 Bezel: Chrome Half ROUND  
 4 CYL  
**Fitting Instructions**



**TACHOMETER****MGB****Part No. RVC2415-00CB**

Type: Electric  
 Range: 0-7000rpm  
 Scale: Full  
 Dia: 80mm  
 Bezel: Chrome Half "V"  
[Fitting Instructions](#)

**TACHOMETER****MGB****Part No. RVI2401-00CB**

Type: Electric  
 Range: 0-7000 rpm  
 Scale: Full  
 Dia: 100mm  
 Bezel: Chrome Half "V"  
 12V -ve earth  
 Stepping Motor Movement  
[Fitting Instructions](#)

**TACHOMETER****MGB****Part No. RVI2401-00CA**

Type: Electric  
 Range: 0-7000rpm  
 Scale: Full  
 Dia: 100mm  
 Bezel: Chrome Half "V"  
 12V -ve earth  
[Fitting Instructions](#)

**TACHOMETER****MGB****Part No. RVI2401-01CB**

Type: Electric  
 Range: 0-7000rpm  
 Scale: Full  
 Dia: 100mm  
 Bezel: Chrome Half "V"  
 12V -ve earth  
 Stepping Motor Movement  
[Fitting Instructions](#)

**TACHOMETER****MGB****Part No. RVI2401-00CBPOS**

Type: Electric  
 Range: 0-7000 rpm  
 Scale: Full  
 Dia: 100mm  
 Bezel: Chrome Half "V"  
 12V +ve earth  
 Stepping Motor Movement  
[Fitting Instructions](#)

**TACHOMETER****MGB****Part No. RVI2415-00CB**

Type: Electric  
 Range: 0-7000rpm  
 Scale: Full  
 Dia: 100mm  
 Bezel: Chrome Half "V"  
 -ve earth 4 Cylinder  
 Alternative: RVI2415-00BB  
 (Black Bezel)  
[Fitting Instructions](#)

**TACHOMETER****RACING MGB****Part No. RVI2415-02CB**

Type: Electric  
 Range: 0-8000 rpm  
 Scale: Full  
 Dia: 100mm  
 Bezel: Chrome Half "V"  
 -ve earth 6 Cylinder  
[Fitting Instructions](#)

**TACHOMETER****MOD MGB****Part No. RVI2415-03CB**

Type: Electric  
 Range: 0-7000rpm  
 Scale: Full  
 Dia: 100mm  
 Bezel: Chrome 1/2 V  
 -ve earth 8 Cylinder  
[Fitting Instruction](#)

**TACHOMETER****MGB****Part No. RVI2415-04CB**

Type: Electric  
 Range: 0-7000rpm  
 Scale: Full  
 Dia: 100mm  
 Bezel: Chrome Full "V"  
 -ve earth 4 Cylinder  
[Fitting Instructions](#)



## MGB Digital Tachometer 7K 100mm Black

100mm Digital Tachometer with black dial, white print and white pointer. With Black or Chrome half 'V' bezel and Orange / Red Sectors at 55500 -7000 RPM. Ignition warning light. 12V -ve earth. Available in 4, 6 and 8 Cylinder



### TACHOMETER

MG

Part No. **RVI2430-00BB**

Type: Electric  
Range: 0-7000 rpm

Scale: Full  
Dia: 100mm  
Bezel: Black Half "V"

4 CYL

[Fitting Instructions](#)



### TACHOMETER

MG

Part No. **RVI2430-00CB**

Type: Electric  
Range: 0-7000 rpm

Scale: Full  
Dia: 100mm  
Bezel: Chrome Half "V"

4CYL

[Fitting Instructions](#)



### TACHOMETER

MG

Part No. **RVI2440-00CB**

Type: Electric  
Range: 0-7000 rpm

Scale: Full  
Dia: 100mm  
Bezel: Chrome Half "V"

8CYL

[Fitting Instructions](#)



### TACHOMETER

MG

Part No. **RVI2619-00CB**

Type: Electric  
Range: 0-7000 rpm

Scale: Full  
Dia: 100mm  
Bezel: Chrome Half "V"

6CYL

[Fitting Instructions](#)



### TACHOMETER

MG

Part No. **RVI2630-00BB**

Type: Electric  
Range: 0-7000 rpm  
Scale: Full

Dia: 100mm  
Bezel: Black Half "V"

6CYL

[Fitting Instructions](#)



### TACHOMETER

MG

Part No. **RVI2630-00CB**

Type: Electric  
Range: 0-7000 rpm  
Scale: Full

Dia: 100mm  
Bezel: Black Half "V"

6CYL

[Fitting Instructions](#)

